

Great Room Plans

1867 Confederation Log Homes photo



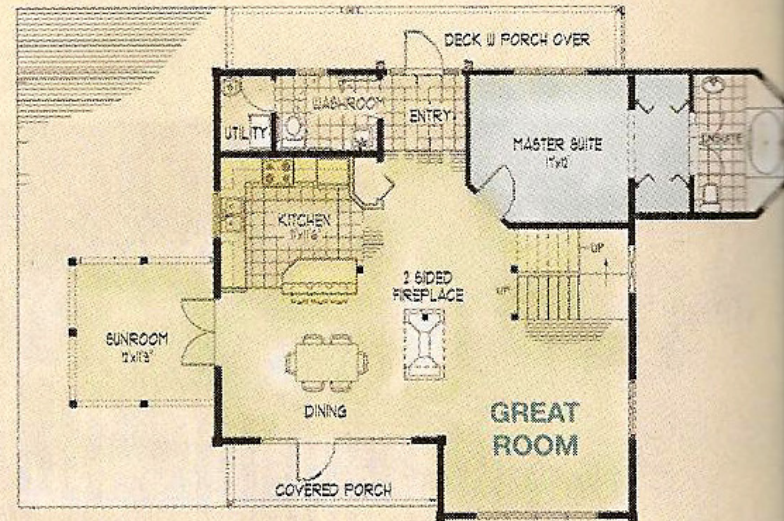
Plan name: **BOBCAYGEON**

Great room square footage: 650

Log producer: 1867 Confederation Log Homes

Total square footage: 2,200

- Soaring, two-story, custom arched windows provide expansive views.
- A dual-sided fireplace between the living and dining areas adds winter warmth and allows ample traffic flow.
- The kitchen island has an eating bar for family and guests to sit around during food preparation.
- Access to the sunroom and decks from the dining area makes the space perfect for barbecues and outdoor entertaining.



Circle 001 on the Reader Service Card between pages 56-57 for free information.